

Tema. Andante.

F: Sor
Op: 3.

Musical notation for the first staff of the 'Tema. Andante' section, featuring a treble clef, 2/4 time signature, and a melody with a triplet of eighth notes.

Musical notation for the second staff of the 'Tema. Andante' section, continuing the melody with various rhythmic patterns.

Musical notation for the third staff of the 'Tema. Andante' section, showing a repeat sign at the beginning.

Musical notation for the fourth staff of the 'Tema. Andante' section, concluding the theme with a double bar line.

Variazione
1.

Musical notation for the first staff of 'Variazione 1', featuring a treble clef and 2/4 time signature.

Musical notation for the second staff of 'Variazione 1', showing a melodic line with slurs.

Musical notation for the third staff of 'Variazione 1', continuing the melodic development.

Musical notation for the fourth staff of 'Variazione 1', featuring a repeat sign and a double bar line.

Variazione
2.

Musical notation for the first staff of 'Variazione 2', featuring a treble clef and 2/4 time signature.

Musical notation for the second staff of 'Variazione 2', concluding the variation with a double bar line.

Variazione
3.

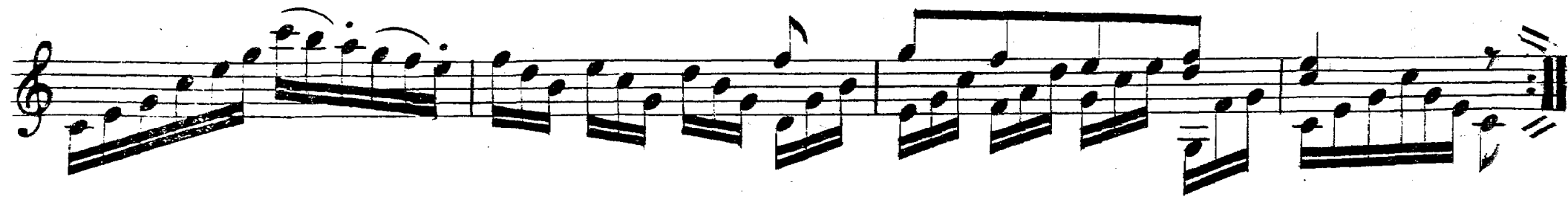
Variazione
4.

Variazione
5.

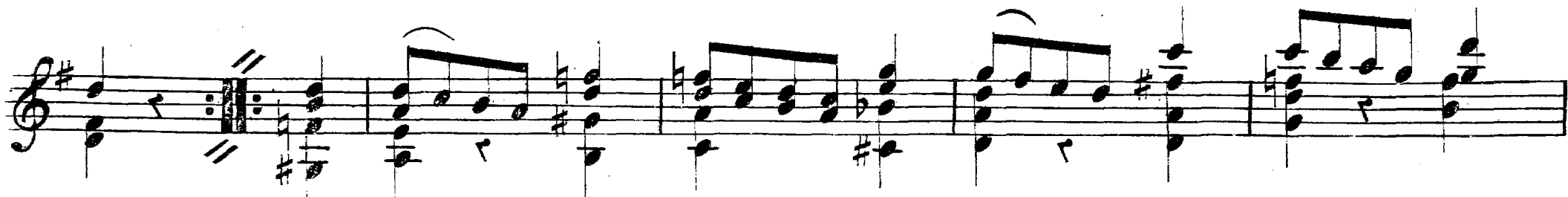
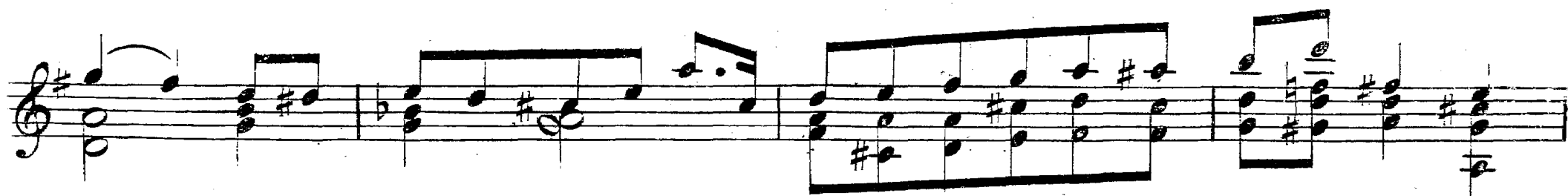


Variazione
6.





Menuetto.



Armonica

Armonica

Naturels.

Naturels.

fin